



I was chatting with one of our young tennis members' parents and heard a disturbing story that [I hope] doesn't become a trend. Some club coaches teaching their impressionable students to use bad line calling as a strategy to win. I'm sure Tournament regulars will be familiar with the Stanley Park Open's reputation over the years for bad line calls. **This is not a strategy people!** Any way you slice it - it's cheating and at the end of the day all we have left is our reputation. I realize this can be a touchy subject and that's why it's mostly talked about in the locker room. I think the vast majority of us do the right thing, unfortunately, it only takes a few bad actors to chip away at the integrity of the game. There are always going to be close calls and intense play so - if you're the least bit unsure of a call then you must call it good for your opponent(s). Don't resort to that short-term gain tactic of **When in doubt, call it out!** Trust me, it will only backfire and cause you long-term pain. NWTC has always been a club affiliated with integrity & fair play and we will continue to do so for the next 100 yrs. as we care about our reputation!

Upcoming Events:

*Game Night - Saturday October 26th. Wearing a Halloween costume is optional - please bring an appie and we'll see you there!

*Christmas Potluck - TBD

*AGM - TBD



Recent Events:

The Edith Webster Memorial Tournament took place Sat. Sept. 28 - WRTC won it 10 - 6.

Now, let's see how our talented NWTC members represented us around town this year:

(Results courtesy of Tennis BC - listed in alphabetical order)

Kenneth Abad - M4.0D Quarters Coquitlam Open

Jangi Bajwa - M3.5S Quarters Surrey Open

Gary Bal - M3.0D - Winner!! Surrey Open

M3.0D Semis Stanley Park Open

M3.0D Quarters Burnaby Open

Harminder Bhupal - Mxd4.0D - Winner!! Newton Doubles Championships

Mxd4.0D - Winner!! Surrey Open

Suhknoor Bohgun - M3.0D Semis Surrey Open

Steven A. Bower - M3.5S Quarters Stanley Park Open

Sasha Cherris-Eva - Mxd4.0D - Winner!! Newton Doubles Championships

W Open S Quarters Coquitlam Open

W Open D Semis Coquitlam Open

Diana Craciun - W Open D Semi Final Stanley Park Open

W Open D Semi Final Richmond Open

W Open S Quarters Richmond Open

Mxd Open D Quarters SPO

Oana Craciun - Mxd4.0D - Winner!! Surrey Open

Mxd4.5D Quarters Surrey Open



Gary B.



Kenneth A.



Sasha Cherris-Eva



Harminder B. Oana C. Sasha Ch-E Javier G.

Georgi Dimiev - Combined 8.0 Mxd D - Winner!! R&R Mxd Doubles Championships

M3.5S - Winner!! Burnaby Open
M3.5S - Finalist! Richmond Open
M3.5S - Finalist! Stanley Park Open
M4.0D - Finalist! Coquitlam Open
M4.5D Semis Coquitlam Open
M3.5D Semis Delta Open

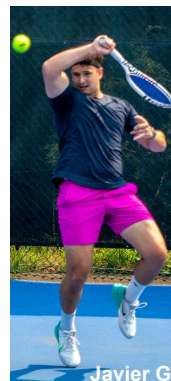


Karen Duque - W4.5S - Finalist! Stanley Park Open
W Open D Semis Coquitlam Open
W Open D Quarters Burnaby Open

Javier Garcia - Mxd Open D Quarters Stanley Park Open

Kathleen Graham - W3.5D Semis Delta Open

Will Kim - M3.0s - Semis Coquitlam Open
M3.0s - Quarters Burnaby Open
Mxd3.0D - Quarters Delta Open
Mxd 3.0D - Semis Richmond Open



Jiyhe Kim - Mxd3.0D - Quarters Delta Open
Mxd3.5D - Semis Surrey Open
Mxd3.5D - Quarters Richmond Open
W3.0S - Semis Richmond Open
W3.5S - Semis Delta Open

Anna Kubrak - W3.0D - Winner!! Burnaby Open
W3.5D - Quarters Surrey Open

Summer Lee - W4.0D - Winner!! Stanley Park Open
Mxd4.0D Semis Burnaby Open

Jan Lee - Mxd4.0D Semis Burnaby Open

Johnny Lee - M4.0D - Finalist! Newton Doubles Championships

Charlotte Mauricio - W3.0D - Winner!! Burnaby Open

Pierre Robinson - Mxd4.5D Quarters Surrey Open

Hardeep Sahota - M3.0D - Winner!! Surrey Open

Mxd3.5D - Winner!! Doubles by the Shore
M3.0D Semis Stanley Park Open
M3.0D Quarterfinal Burnaby Open
M3.5S Quarterfinal Delta Open



Maki Soda - Combined 8.0 Mxd D - Winner!! R&R Mxd Doubles Championships

Farrukh Tanweer - M4.0D Quarterfinal Coquitlam Open

Andrew S.F. Tong - Mxd3.5D Semis Burnaby Open

Haruko Uchida - W4.5D - Winner!! Delta Open

Amelia Weatherbe - W3.5D Semis Delta Open

Che Yaneza Solis - Mxd3.0D - Winner!! Surrey Open

Mxd3.5D Semis Coquitlam Open
W3.5D - Quarters Surrey Open
(apologies if I missed anyone 😊)



****A Reminder About Winter Court Rules:** Check the Club Calendar to see when they will take effect. **Hint: The net on Crt#4 will be removed.** Members are expected to squeegee and clean Crts. #1, #2 & #3 before using the one set rule. Once all three courts are full, normal white board rules will apply. Crt#4 will be deemed 'unplayable' until the Spring.